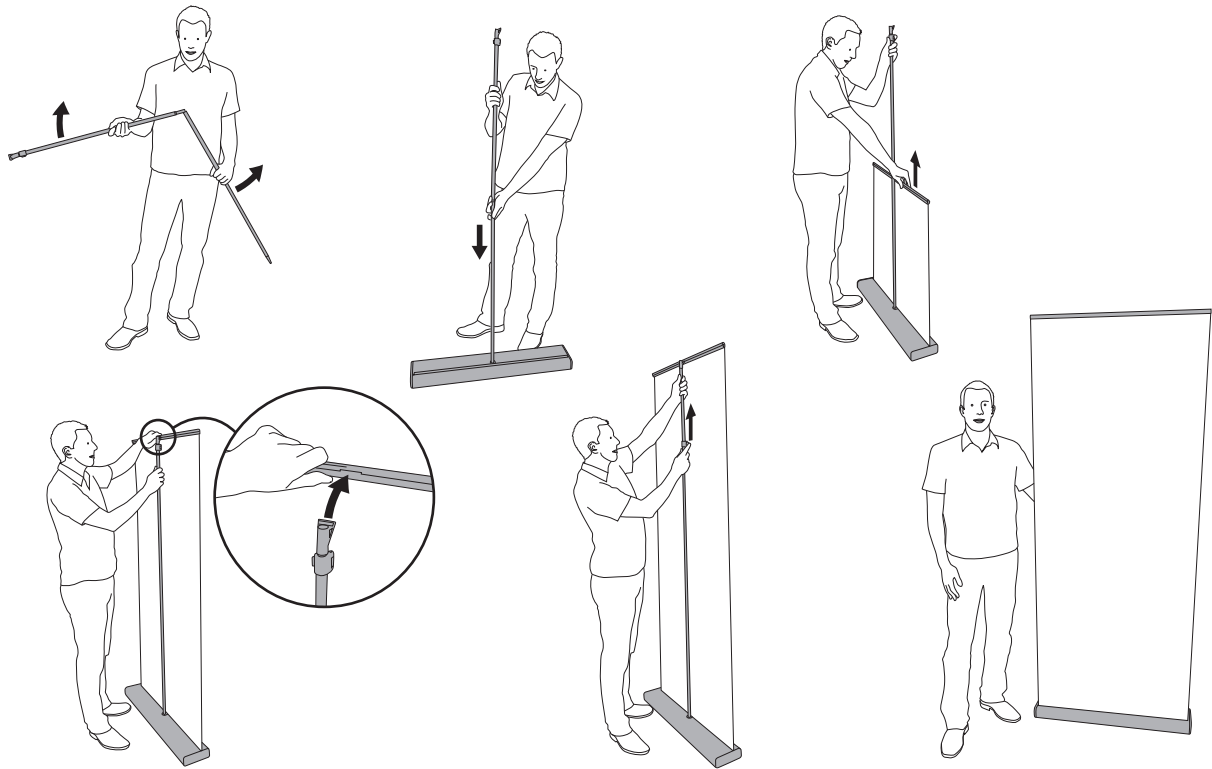


# The M2

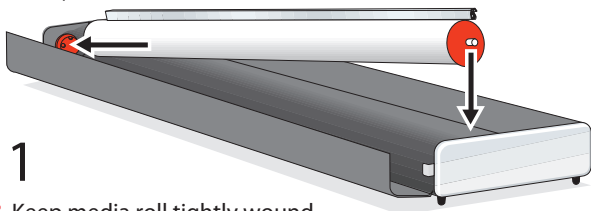
## Set up instructions

### Set up - Step by step



### How to switch media roll

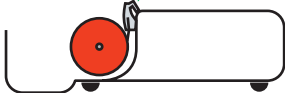
Pat.pend.



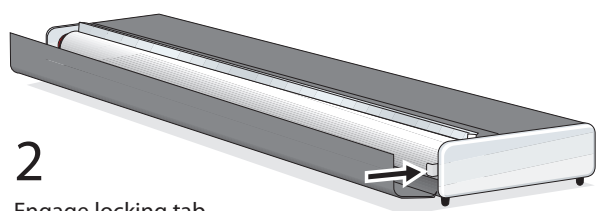
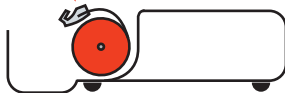
1

- Keep media roll tightly wound
- The top profile should be in the position pictured below
- Place hollow end of media roll on to left side connector knob
- Then place the right side of the media roll with the metal pin

**RIGHT**

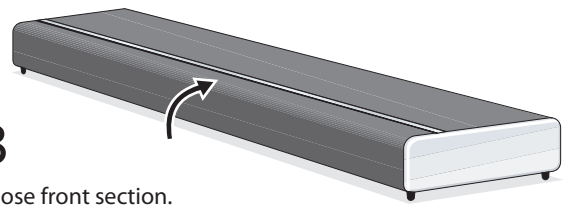


**WRONG**



2

- Engage locking tab by pushing it inwards.



3

- Close front section.